



SCT X4 7015C15 2015 Ford 6.7L Diesel

VERY IMPORTANT!!!!!!!!!!!!!! PLEASE READ ALL INSTRUCTIONS!

Always tune truck before deleting the exhaust

STEP 1- Plug tuner into truck, scroll down to vehicle info. Follow key on/off prompts. Tuner will display ecu/tcu strategy and sw part numbers for ecu/tcu. See if your stock ecu strategy is on the list below;

DDDF2A7 DDDF2C5 DDDF2D8 DDDF2N3 DDDG1AA
DDDG1A4 DDDG1C4 DDDG1C7 DDDG1D3 DDDG1R3

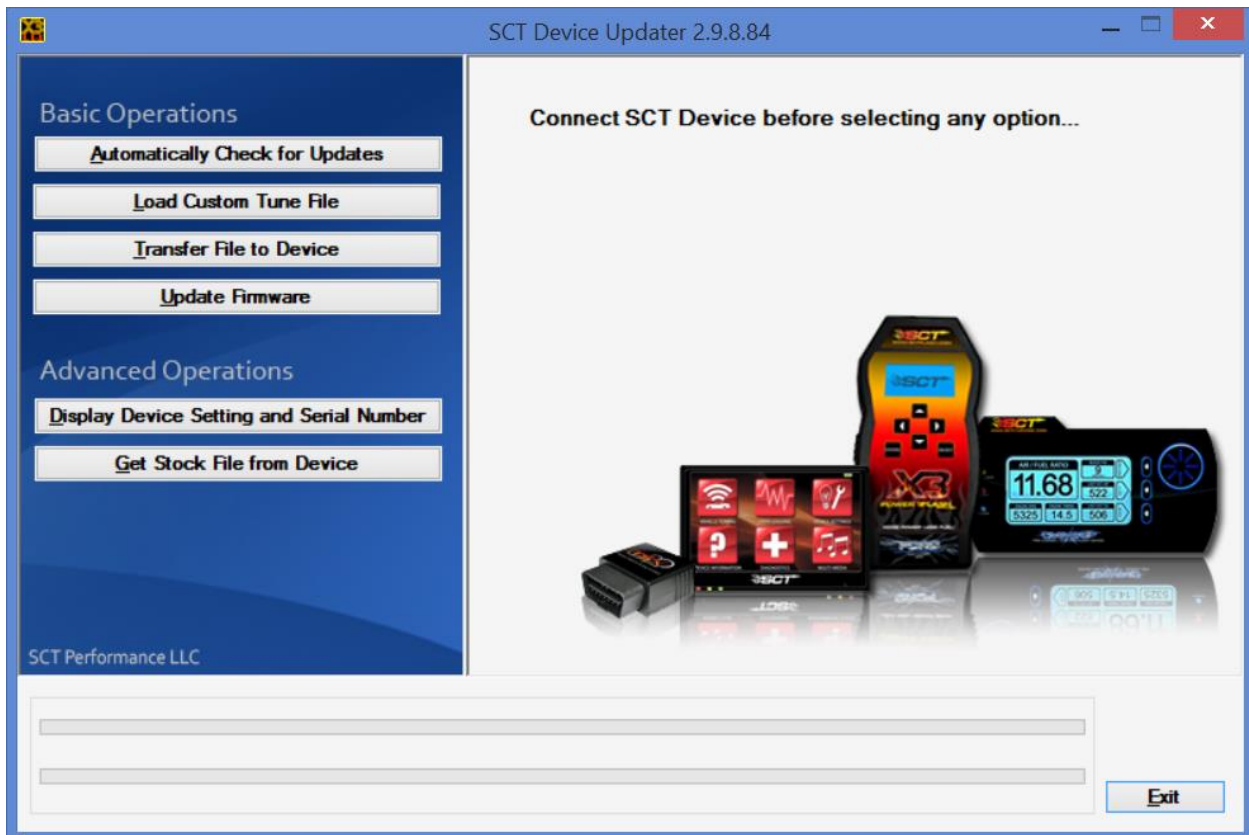
If your strategy is in the list, skip to STEP 5

If not, email your ECU and TCU strategy to tech@punchitperformance.com and include serial number off back of tuner. We will email you a stock file to load onto the device.

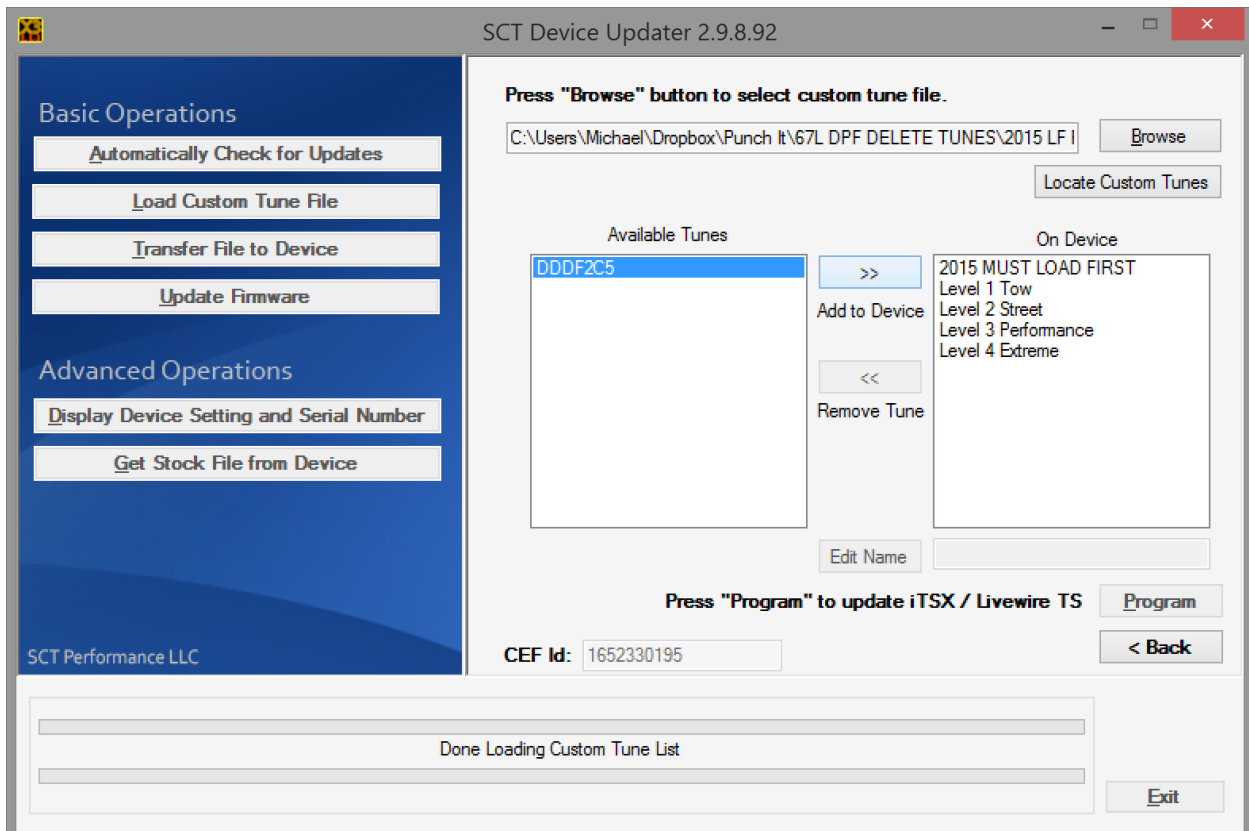
STEP 2- Go to your web browser and type in <http://sctflash.com/software/SCTDeviceUpdater.exe> Choose RUN and install software. Once installed, plug tuner in with supplied usb cable. Allow 30 seconds to automatically install drivers. There is also a link to this software in the email that we will send you. ** If you have windows 8, you must load the drivers manually, give us a call for help doing this 407-721-2824 www.sctflash.com/software/x64_driver_files.zip

STEP 3- Open the new software from your desktop that was just installed





STEP 4- Save file from email that was sent to you, somewhere easy to find on desktop or my documents. Then click Load Custom Tune File. At top right you will see a browse button, locate file you saved from email and click open. Then highlight the file and then hit right arrow to move to right hand box. Once there, click program.



STEP 5- Plug tuner into vehicle, select Program Vehicle, (DO NOT SELECT Pre Loaded Tunes at top)

STEP 6- Follow key on/off prompts, when list of tunes displays, select MUST LOAD FIRST. DO NOT SELECT ANY OPTIONS, this can be done on another step.

STEP 7- After the LOAD First file has been fully installed, Choose one of the other Custom Tunes. TOW, STREET, PERFORMANCE, or EXTREME and go through the installation process. Once it says Download completed, you may unplug tuner and proceed with your exhaust removal.

PLEASE NOTE, VERY IMPORTANT****

If you are not physically deleting your egr system, you will need to unplug three connectors under the hood. On the passenger side near top of valve cover you will see an orange connector. Unplug that one. Right next to it there is a vacuum actuated valve with black connector, unplug that one also. Then on the front of the engine, in between the engine and radiator fan shroud, you will see an orange connector. It is underneath large tube, slide back safety tab and unplug.

